

## Monthly Weather Summary in Thailand April 2016

Under the influence of the heat low pressure cell and the southerly winds, the weather of Thailand was about 2 °C hotter and 64 % drier than 1981-2010 normal. Generally hot weather and very hot weather in several areas continuously occurred in upper Thailand nearly the whole month with the new highest record of maximum temperature in several areas particularly the 44.6°C highest temperature of Thailand's 66 years record (1951-2016) measured at Amphoe Mueang in Mae Hong Son province on April 28. For southern Thailand, hot weather occurred in most of the whole areas with very hot weather in some areas. With a passage of the westerly trough through the northern, upper central and upper northeastern parts during early month and the high pressure area from China occasionally extended its ridge to cover upper Thailand while swelter still appeared, local weather became unsettled with outbreak of heavy rain and squally thunderstorms with hail reported in some areas particularly in late month. However no rainfall reported in some areas throughout the month causing monthly rainfall over Thailand was below normal i.e. northern part 43.7 mm (61%), northeastern part 15.0 mm (17%), central part 66.2 mm (83%), eastern part 73.6 mm (74%), southern part (east coast) 68.2 mm (90%) and southern part (west coast) 135.7 mm (84%).

**1 – 10 April:** The westerly trough moved through the northern, upper central and upper northeastern parts during early period then the heat low pressure cell covered upper Thailand with the prevailing of the southerly and southeasterly winds over the central, eastern northeastern and southern parts. These caused hot to very hot weather in upper Thailand during early period then increasing in temperature with very hot weather nearly the whole areas, except for hot weather in some areas over the lower coastal of eastern part. The highest temperature of 43.2 °C was measured at Amphoe Thoen in Lampang province on April 7 and Amphoe Chaibadan in Lop Buri on April 10. In southern Thailand, hot weather nearly the whole areas with very hot in same areas on the last day of the period. The highest temperature of 41.0 °C was measured at Amphoe Chawang in Nakhon Si Thammarat province on April 10. For rainfall, Thailand experienced isolated rain for few days except for widely scattered rain with heavy rainfall in some areas over northeastern part during early period. The maximum daily rainfall of 59.7 mm was recorded at Amphoe Mueang in Udon Thani province on April 2. Thunderstorms with gusty wind occurred at Phayoa on April 1 and Lampang, Mahasarakham, Si Saket and Buriram on April 8. Hail occurred at Chiang Rai, Chiang Mai and Phayao provinces April 9.

**11 – 20 April:** Heat low pressure cell covered upper Thailand accompanied with the prevailing of southerly wind over Thailand almost the whole period. These caused very hot weather in northern, northeastern and upper central parts nearly the whole period while the weather in eastern and southern parts were hot in almost the areas with very hot in some areas. The highest maximum temperature was 44.3 °C at Amphoe Si Samrong in Sukhothai province on March 12. For rainfall, Thailand experienced isolated rain in a few days except for increasing rain in upper Thailand during late period particularly in northeastern part experienced widely scattered to scattered rain with heavy rainfall in some areas. The maximum daily rainfall in upper Thailand was 72.0 mm at Kuchinarai Self-Help Settlement in Kalasin province on April 20. Thunderstorms with gusty wind occurred at Lampang, Uthai Thani, Kamphaeng Phet, Chaiyaphum, Nong Bua Lumphu, Loei, Nakhon Ratchasima, Udon Thani, Nong Khai, Surin, Si Saket, Buriram, and Sakaeo provinces during late period. Hail occurred at Khon Kaen province on April 15.

**21 – 30 April:** The heat low pressure cell covered upper Thailand throughout the period. In addition, the southerly winds prevailed over Thailand during the first half of the period. Furthermore, the westerly winds prevailed over northern and northeastern parts on 26-27 Apr. Hot weather continued in upper Thailand especially very hot weather nearly the whole areas in northern, northeastern and central parts. The highest temperature of 44.6 °C was at Amphoe Muang in Mae Hong Son province on April 28. For rainfall, upper Thailand increasing experienced thundery shower especially scattered to fairly widespread rain with heavy rainfall in some areas during late period. The maximum daily rainfall of 87.0 mm was recorded in upper Thailand at Roi Et Agromet stn. in Roi Et province on April 29 while Southern Thailand obtained isolated to

widely scattered rain with heavy rainfall in some areas. The heaviest daily rainfall of 69.2 mm occurred at Trang airport in Trang province on April 23. High pressure area from China extended its ridge to cover the east of northern, northeastern, eastern and central parts during late period brought thunderstorms with gusty wind to Phicit, Phayao, Lampang, Chaiphum, Nakhon Ratchasima, Mukdahan, Lop Buri, Ratcha Buri, Pathum Thani and Prachap Khiri Khan provinces and hail occurred at Phetchabun and Udon Thani provinces.

**Breaking record of daily maximum temperature over Thailand in April 2015**

Station	New Record 2015		Previous Record		Start Year
	Temp ( °C)	Date	Temp ( °C)	Date / Year	
Mae Hong Son	44.6	28	43.4	26/2010	1955
Chiang Rai Agromet.	41.2	28	40.8	23/1990	1979
Chiang Mai	41.6	15,28	41.5	29/1960	1952
Nan	42.8	14	41.1	12/1959	1951
Thung Chang (Nan)	41.6	27	40.3	22/2010	1998
Lamphum	43.6	12	42.6	29/1983	1981
Lampang Agromet.	43.5	12	42.7	21/1992	1982
Thoen (Lampang)	43.8	11	43.1	6/2010	2004
Sukhothai	44.3	12	43.1	20/2015	2000
Bhumibol Dam	43.9	27	43.7	26/1998	1960
Mea Sot (Tak)	41.2	19	41.1	8/2010	1951
Doi Muser Agromet.(Tak)	36.5	19	36.2	1/2005	1993
Lom Sak (Phetchabun)	42.0	18	41.5	29/1975	1970
Phetchabun	43.3	26	43.0	25/1958	1951
Kamphaeng Phet	44.0	26	43.0	14,15/1983	1981
Picit Agromet.	42.2	26	41.7	21/2015	1993
Sakon Nakhon Agromet.	42.5	12,15,17	42.3	14/1983	1969
Tha Pra (Khon Kaen)	42.7	11,18	42.6	5/2013	1970
Kosum Phisai	42.5	11	42.4	14/1983	1970
Lamalasai	41.9	17	41.8	5/2013	1998
Roi Et	42.3	11	42.2	21/2015	1955
Ubon Ratchathani	42.6	15	42.0	14/1998	1951
Surin	42.0	11	41.6	14/1983	1951
Surin Agromet.	43.3	16	41.8	14/1983	1969
Nakhon Ratchasima	43.2	11	42.7	7/1979	1951
Chok Chai	42.5	11	41.1	14/1998	1970
Buri Ram	43.2	16	42.5	21/2015	2003

**Breaking record of daily maximum temperature over Thailand in April 2015 (Cont.)**

Station	New Record 2015		Previous Record		Start Year
	Temp ( °C)	Date	Temp ( °C)	Date / Year	
Nang Rong (Buri Ram)	43.0	12	41.8	12/2015	1970
Nakhon Sawan	43.4	19	42.5	25/1969	1951
Takfa (Nakhon Sawan)	41.7	22,26	41.5	23/1990	1969
Chai Nat	41.8	11	41.6	5/2556	2513
Ayuthaya Agromet.	42.1	10	40.6	24/2541	2537
Bua Chum (Lop Buri)	43.2	10	42.7	14/2526	2513
Ratcha Buri	41.5	12	40.9	24/2541	2536
Kampheang Saen	41.4	11	40.8	13/2526	2516
Pathum Thani	40.7	10	40.5	15/2547	2541
Sa Kaeo	42.2	11	40.8	21/2558	2541
Aranyoprathet	42.2	11	41.7	14/2526	2495
Chachoengsao Agromet.	41.0	11	40.2	15/2547	2532
Khlong Yai (Trat)	35.7	18	35.5	25/2526	2495
Nong Plub Agromet.	42.0	11	41.8	21/2558	2517
Surat Thani	41.3	11	39.7	13/2535	2494
Surat Thani Agromet.	39.2	12	37.8	13/2541	2536
Ko Samui	38.0	11	36.6	21/2558	2512
Pattalung Agromet.	39.4	12	37.3	23/2533	2524
Hat Yai	39.7	28	39.2	15/2541	2516
Korhong Agromet.	39.9	11	37.5	14/2553	2512
Sa Dao	40.3	27	37.7	5/2558	2542
Pattani	38.7	21	37.9	23/2541	2507
Yala Agromet.	40.1	14,28	40.0	14/2541	2525
Krabi	39.2	20	38.9	3/2541	2537
Satun	39.6	20	38.9	18/2526	2521

**Note :** Rainfall, temperatures and natural disasters in this report were updated up to May 24, 2016.

Climatological Center  
Meteorological Development Bureau

Monthly Current Report  
Rainfall and Accumulative Rainfall  
April 2016

Northern Thailand

Station	Temperature ( °c)		Rainfall (mm)		Accumulative rainfall (mm) Since 1 January	
	Mean	Above or below normal	Actual	Above or below normal	Actual	Above or below normal
Chiang Rai	29.5	2.4	4.8	-93.1	42.2	-105.2
Mae Hong Son	33.1	3.0	12.6	-50.6	40.8	-51.6
Phayao	31.1	2.4	14.3	-74.9	64.6	-69.7
Chiang Mai	32.4	3.1	17.7	-39.6	97.2	9.0
Tha Wang Pha	30.2	1.9	125.9	23.4	172.1	20.1
Nan	31.3	2.3	76.2	-23.4	144.8	-3.8
Lamphun	32.7	2.6	9.2	-35.3	59.9	-5.4
Lampang	32.9	2.9	57.0	-8.9	173.5	73.2
Mae Sariang	31.9	2.6	15.3	-29.4	50.1	-16.8
Phrae	33.2	3.2	2.9	-79.2	36.2	-88.1
Uttaradit	33.6	2.8	22.7	-48.3	50.0	-64.4
Bhumibol Dam	34.2	3.3	30.8	-35.3	72.5	-24.2
Tak	34.0	2.5	5.4	-52.2	44.3	-36.2
Mae Sot	31.0	1.9	0.0	-44.8	55.8	-14.4
Umphang	28.5	2.4	16.4	-84.9	56.8	-108.3
Phitsanulok	33.4	2.6	0.4	-55.3	43.7	-56.1
Lom Sak	32.0	2.8	53.0	-10.2	106.7	-22.2
Phetchabun	33.3	3.5	26.7	-49.3	68.9	-76.7
Wichian Buri	33.1	2.7	60.9	-29.0	61.0	-99.8
Kamphaeng Phet	33.9	3.5	0.0	-52.8	28.2	-76.7
Over the area	32.3	2.8	27.6	-43.7 -61%	73.5	-40.9 -36%

Northeastern Thailand

Station	Temperature ( °c)		Rainfall (mm)		Accumulative rainfall (mm) Since 1 January	
	Mean	Above or below normal	Actual	Above or below normal	Actual	Above or below normal
Nong Khai	32.5	3.0	74.0	-9.4	159.0	10.2
Loei	31.0	2.6	39.6	-63.1	83.7	-80.6
Udon Thani	32.6	2.8	91.9	17.8	122.5	-29.6
Nakhon Phanom	31.4	2.4	98.4	-2.7	130.4	-64.8
Sakon Nakhon	32.0	2.9	75.8	-17.5	93.2	-91.6
Mukdahan	33.0	3.4	24.3	-52.1	40.4	-95.9
Khon Kaen	32.7	2.8	103.0	13.4	131.9	-25.2
Kosum Phisai	33.0	2.9	141.1	52.1	183.3	24.0
Roi Et	33.0	3.2	105.3	29.4	129.6	-10.3
Chaiyaphum	33.0	3.0	84.9	-7.7	190.6	27.9
Ubon Ratchathani	33.0	3.0	40.4	-46.4	67.1	-67.6
Tha Tum	32.4	2.0	93.7	7.0	125.1	-27.0
Surin	32.9	3.1	27.5	-65.8	43.5	-112.5
Nakhon Ratchasima	32.9	2.9	21.7	-50.5	59.7	-73.9
Chok Chai	32.4	2.8	45.6	-35.7	79.3	-58.3
Nang Rong	32.2	2.7	74.0	-7.6	97.6	-56.2
Over the area	32.5	2.8	71.3	-15.0 -17%	108.6	-45.7 -30%

- NOTES :
- 1) Mean temperature is the average of daily dry-bulb temperature
  - 2) "T" is trace, rainfall amount less than 0.1 mm.
  - 3) "blank" is incomplete data.
  - 4) Temperature and rainfall are preliminary data.

Monthly Current Report  
Rainfall and Accumulative Rainfall  
April 2016

Central Thailand

Station	Temperature ( °c)		Rainfall (mm)		Accumulative rainfall (mm) Since 1 January	
	Mean	Above or below normal	Actual	Above or below normal	Actual	Above or below normal
Nakhon Sawan	34.2	2.8	1.5	-62.2	8.3	-104.7
Bua Chum	33.1	2.8	6.5	-74.9	12.9	-130.1
Lop Buri	32.4	2.0	37.4	-44.1	94.8	-31.4
Suphan Buri	32.5	2.1	0.0	-49.1	88.9	10.3
Thong Pha Phum	32.0	2.2	8.8	-93.0	63.6	-106.4
Kanchanaburi	33.4	2.4	7.9	-70.6	64.1	-64.9
Bangkok Airport	32.1	1.7	12.9	-75.6	81.0	-68.3
Bangkok Metropolis	31.6	1.1	31.1	-60.3	157.8	-9.0
Over the area	32.7	2.2	13.3	-66.2 -83%	71.4	-63.1 -47%

Eastern Thailand

Station	Temperature ( °c)		Rainfall (mm)		Accumulative rainfall (mm) Since 1 January	
	Mean	Above or below normal	Actual	Above or below normal	Actual	Above or below normal
Prachin Buri	32.4	2.3	17.2	-100.8	57.1	-134.3
Kabin Buri	31.6	1.8	38.2	-60.6	61.3	-122.9
Aranyaprathet	32.5	2.4	66.4	-19.3	77.4	-93.7
Chon Buri	32.1	1.9	9.0	-65.1	113.3	-32.5
Ko Sichang	30.9	1.1	0.0	-77.3	55.1	-98.4
Pattaya	30.4	1.1	12.2	-51.8	123.7	-23.5
Sattahip	30.3	0.5	0.0	-78.9	110.3	-72.4
Rayong	30.7	0.7	0.0	-81.6	115.4	-93.7
Chanthaburi	30.3	1.6	23.1	-102.1	102.5	-149.7
Khlong Yai	29.8	1.3	86.8	-98.6	413.3	-10.6
Over the area	31.1	1.5	25.3	-73.6 -74%	122.9	-83.3 -40%

- NOTES :
- 1) Mean temperature is the average of daily dry-bulb temperature
  - 2) "T" is trace, rainfall amount less than 0.1 mm.
  - 3) "blank" is incomplete data.
  - 4) Temperature and rainfall are preliminary data.

Monthly Current Report  
Rainfall and Accumulative Rainfall  
April 2016

Southern Thailand, east coast

Station	Temperature ( °c)		Rainfall (mm)		Accumulative rainfall (mm) Since 1 January	
	Mean	Above or below normal	Actual	Above or below normal	Actual	Above or below normal
Phetchaburi	31.2	1.5	13.6	-23.3	20.6	-64.7
Hua Hin	30.7	1.1	3.3	-43.1	45.1	-82.3
Prachuap Khiri Khan	30.3	1.1	48.6	-6.9	189.2	15.7
Chumphon	30.0	1.3	0.0	-85.8	205.1	-82.0
Surat Thani	30.3	2.0	0.0	-73.4	89.1	-57.4
Ko Samui	30.3	1.2	2.0	-81.1	166.9	-137.6
Nakhon Si Thammarat	29.8	1.4	0.0	-107.0	233.0	-177.3
Songkhla	29.9	1.0	1.7	-73.4	218.7	-39.5
Hat Yai Airport	29.6	1.6	6.8	-111.8	160.4	-111.5
Pattani Airport	29.7	1.5	0.0	-74.6	76.8	-130.1
Narathiwat	29.8	1.5	2.8	-70.0	364.3	18.8
Over the area	30.1	1.3	7.2	-68.2 -90%	160.8	-77.2 -32%

Southern Thailand, west coast

Station	Temperature ( °c)		Rainfall (mm)		Accumulative rainfall (mm) Since 1 January	
	Mean	Above or below normal	Actual	Above or below normal	Actual	Above or below normal
Ranong	30.4	1.6	4.5	-148.1	98.8	-145.0
Takua Pa	29.5	1.3	61.3	-148.7	135.7	-269.4
Phuket	31.2	1.8	0.0	-142.9	65.8	-204.8
Phuket Airport	30.4	1.8	0.0	-154.0	253.5	-64.2
Ko Lanta	30.5	1.5	2.0	-117.0	37.2	-177.2
Trang Airport	30.8	2.5	79.8	-59.9	165.6	-110.8
Satun	30.4	2.0	26.5	-179.5	61.8	-333.2
Over the area	30.5	1.8	24.9	-135.7 -84%	116.9	-186.4 -61%

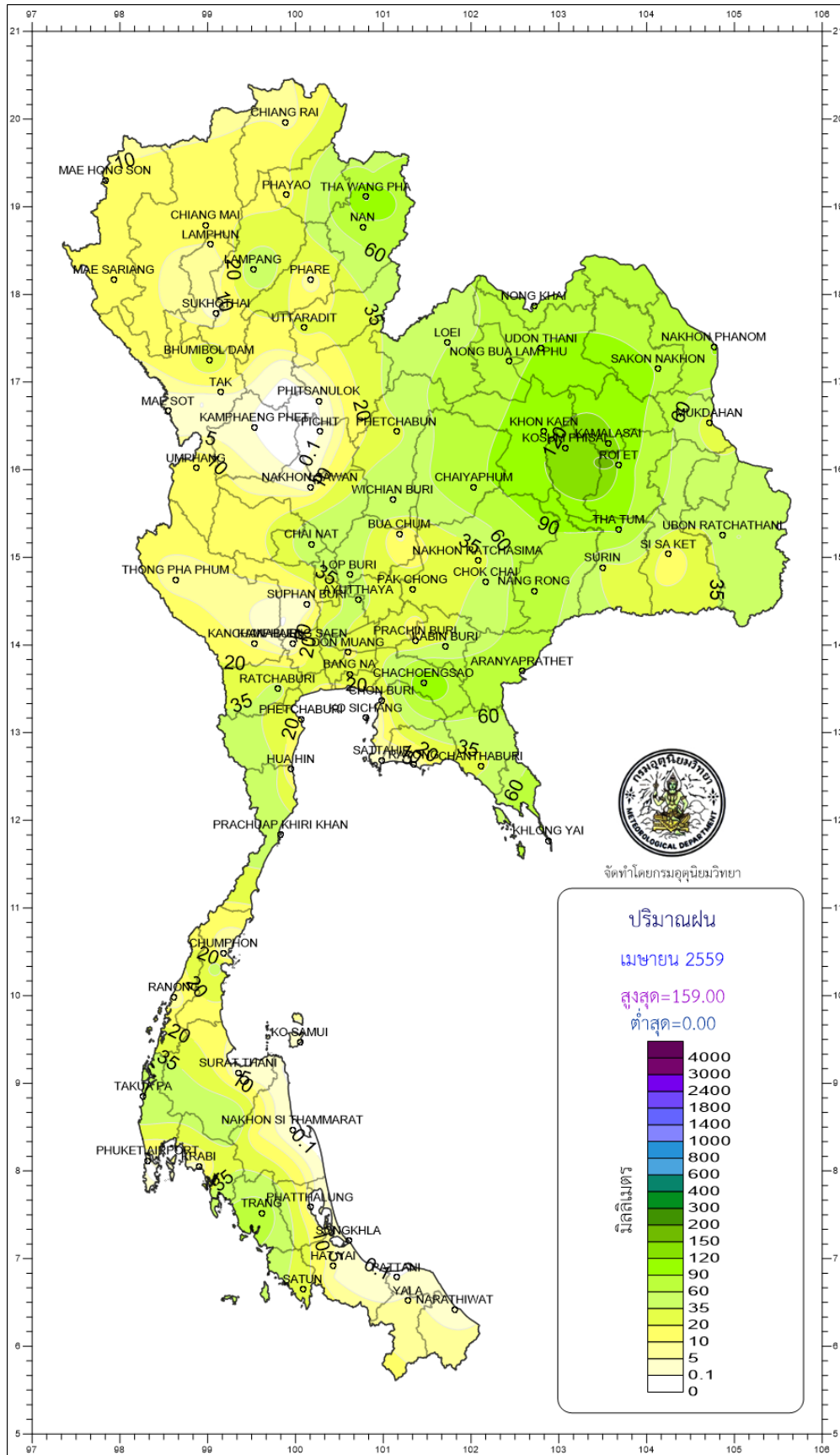
- NOTES :
- 1) Mean temperature is the average of daily dry-bulb temperature
  - 2) "T" is trace, rainfall amount less than 0.1 mm.
  - 3) "blank" is incomplete data.
  - 4) Temperature and rainfall are preliminary data.

**Monthly Current Report**

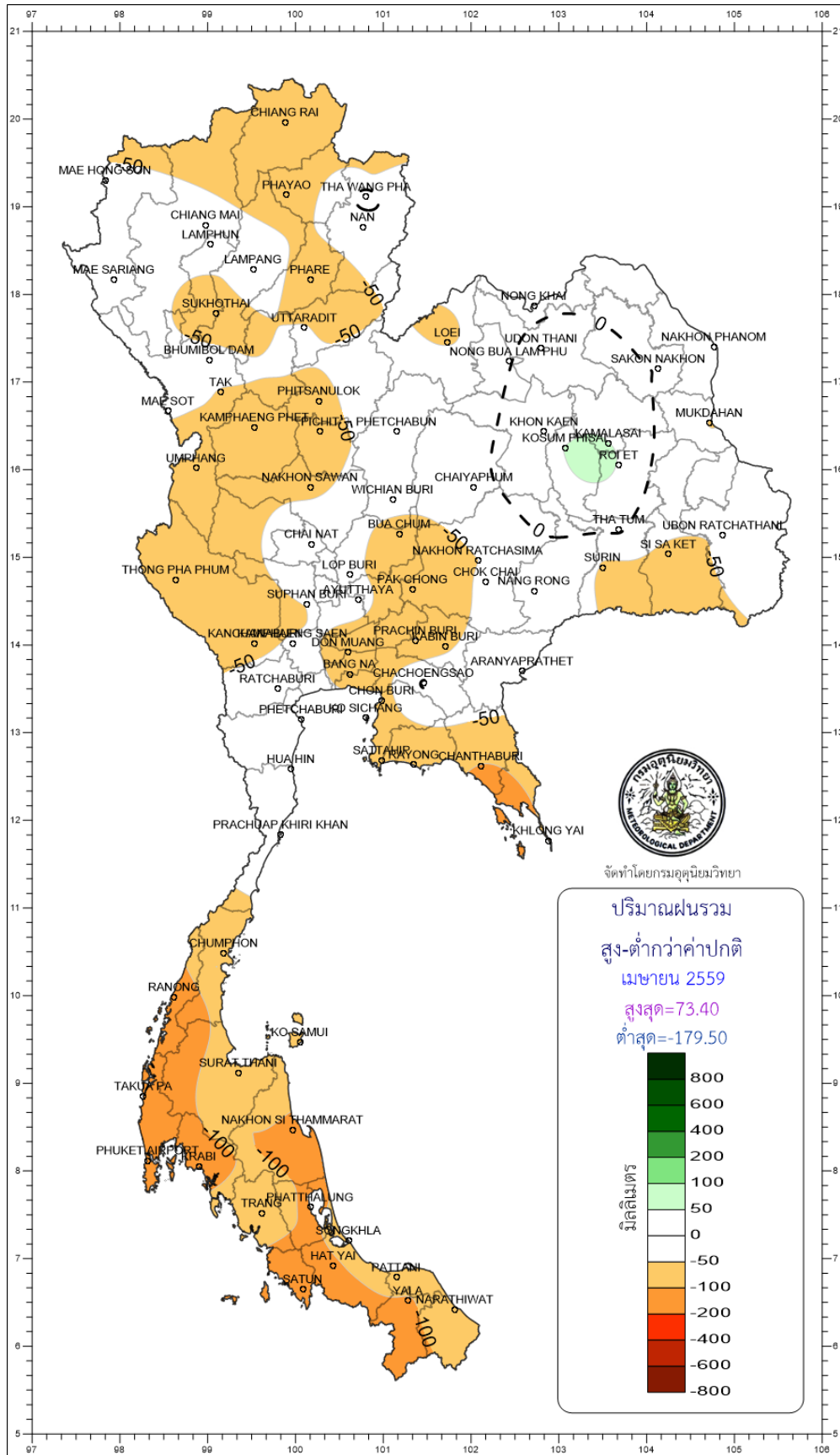
**April 2016**

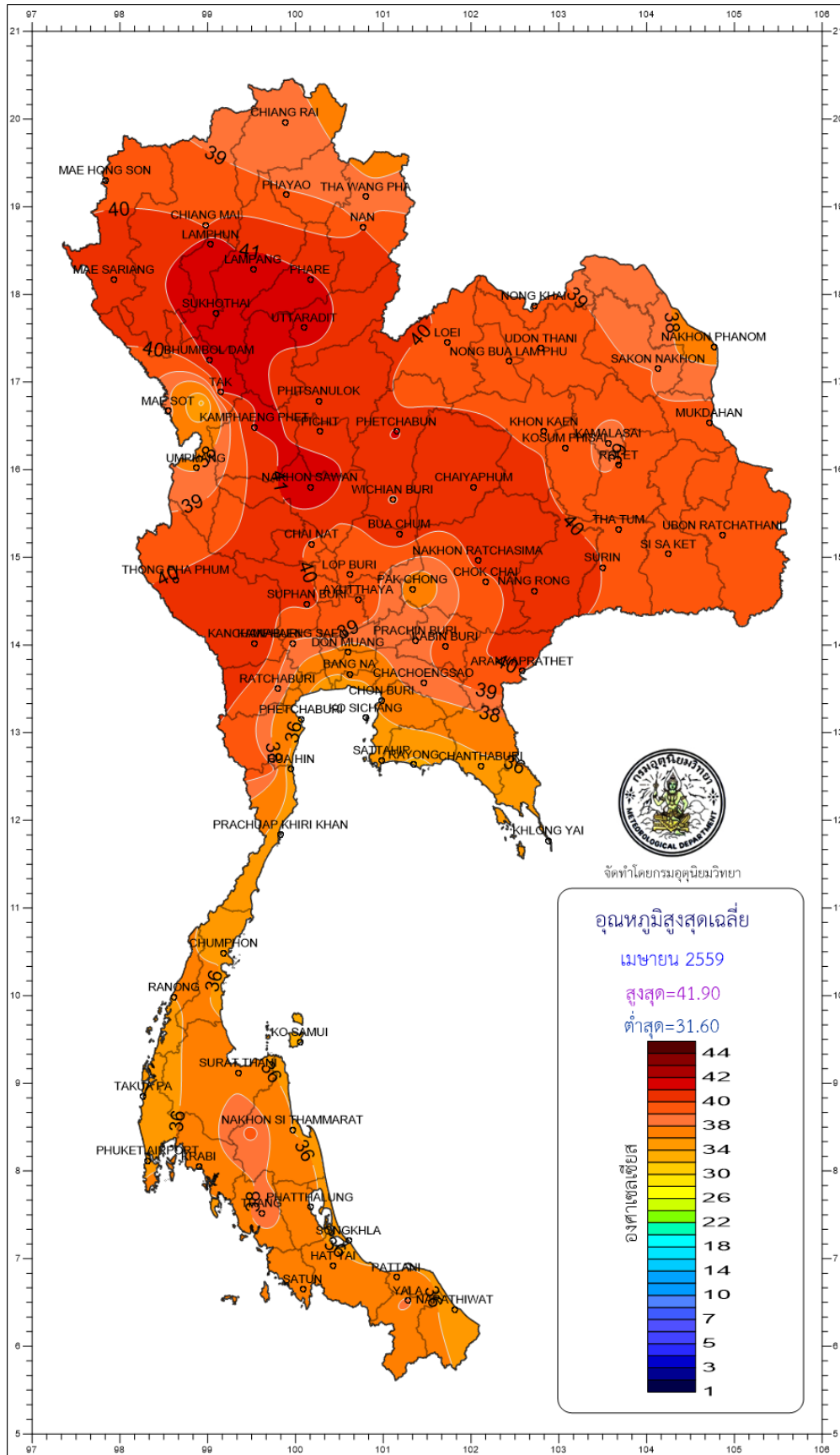
Region	Station	Temperature (°c)		Rainfall (mm)		Accumulative rainfall (mm) Since 1 January	
		Mean	Above or below normal	Actual	Above or below normal	Actual	Above or below normal
North	Chiang Rai	29.5	2.4	4.8	-93.1	42.2	-105.2
	Mae Hong Son	33.1	3.0	12.6	-50.6	40.8	-51.6
	Phayao	31.1	2.4	14.3	-74.9	64.6	-69.7
	Chiang Mai	32.4	3.1	17.7	-39.6	97.2	9.0
	Tha Wang Pha	30.2	1.9	125.9	23.4	172.1	20.1
	Nan	31.3	2.3	76.2	-23.4	144.8	-3.8
	Lamphun	32.7	2.6	9.2	-35.3	59.9	-5.4
	Lampang	32.9	2.9	57.0	-8.9	173.5	73.2
	Mae Sariang	31.9	2.6	15.3	-29.4	50.1	-16.8
	Phrae	33.2	3.2	2.9	-79.2	36.2	-88.1
	Uttaradit	33.6	2.8	22.7	-48.3	50.0	-64.4
	Bhumibol Dam	34.2	3.3	30.8	-35.3	72.5	-24.2
	Tak	34.0	2.5	5.4	-52.2	44.3	-36.2
	Mae Sot	31.0	1.9	0.0	-44.8	55.8	-14.4
	Umphang	28.5	2.4	16.4	-84.9	56.8	-108.3
	Phitsanulok	33.4	2.6	0.4	-55.3	43.7	-56.1
	Lom Sak	32.0	2.8	53.0	-10.2	106.7	-22.2
	Phetchabun	33.3	3.5	26.7	-49.3	68.9	-76.7
	Wichian Buri	33.1	2.7	60.9	-29.0	61.0	-99.8
	Kamphaeng Phet	33.9	3.5	0.0	-52.8	28.2	-76.7
Northeast	Nong Khai	32.5	3.0	74.0	-9.4	159.0	10.2
	Loei	31.0	2.6	39.6	-63.1	83.7	-80.6
	Udon Thani	32.6	2.8	91.9	17.8	122.5	-29.6
	Nakhon Phanom	31.4	2.4	98.4	-2.7	130.4	-64.8
	Sakon Nakhon	32.0	2.9	75.8	-17.5	93.2	-91.6
	Mukdahan	33.0	3.4	24.3	-52.1	40.4	-95.9
	Khon Kaen	32.7	2.8	103.0	13.4	131.9	-25.2
	Kosum Phisai	33.0	2.9	141.1	52.1	183.3	24.0
	Roi Et	33.0	3.2	105.3	29.4	129.6	-10.3
	Chaiyaphum	33.0	3.0	84.9	-7.7	190.6	27.9
	Ubon Ratchathani	33.0	3.0	40.4	-46.4	67.1	-67.6
	Tha Tum	32.4	2.0	93.7	7.0	125.1	-27.0
	Surin	32.9	3.1	27.5	-65.8	43.5	-112.5
	Nakhon Ratchasima	32.9	2.9	21.7	-50.5	59.7	-73.9
	Chok Chai	32.4	2.8	45.6	-35.7	79.3	-58.3
Nang Rong	32.2	2.7	74.0	-7.6	97.6	-56.2	
Central	Nakhon Sawan	34.2	2.8	1.5	-62.2	8.3	-104.7
	Bua Chum	33.1	2.8	6.5	-74.9	12.9	-130.1
	Lop Buri	32.4	2.0	37.4	-44.1	94.8	-31.4
	Suphan Buri	32.5	2.1	0.0	-49.1	88.9	10.3
	Thong Pha Phum	32.0	2.2	8.8	-93.0	63.6	-106.4
	Kanchanaburi	33.4	2.4	7.9	-70.6	64.1	-64.9
	Bangkok Airport	32.1	1.7	12.9	-75.6	81.0	-68.3
	Bangkok Metropolis	31.6	1.1	31.1	-60.3	157.8	-9.0
East	Prachin Buri	32.4	2.3	17.2	-100.8	57.1	-134.3
	Kabin Buri	31.6	1.8	38.2	-60.6	61.3	-122.9
	Aranyaprathet	32.5	2.4	66.4	-19.3	77.4	-93.7
	Chon Buri	32.1	1.9	9.0	-65.1	113.3	-32.5
	Ko Sichang	30.9	1.1	0.0	-77.3	55.1	-98.4
	Pattaya	30.4	1.1	12.2	-51.8	123.7	-23.5
	Sattahip	30.3	0.5	0.0	-78.9	110.3	-72.4
	Rayong	30.7	0.7	0.0	-81.6	115.4	-93.7
	Chanthaburi	30.3	1.6	23.1	-102.1	102.5	-149.7
	Khlong Yai	29.8	1.3	86.8	-98.6	413.3	-10.6
South (East Coast)	Phetchaburi	31.2	1.5	13.6	-23.3	20.6	-64.7
	Hua Hin	30.7	1.1	3.3	-43.1	45.1	-82.3
	Prachuap Khiri Khan	30.3	1.1	48.6	-6.9	189.2	15.7
	Chumphon	30.0	1.3	0.0	-85.8	205.1	-82.0
	Surat Thani	30.3	2.0	0.0	-73.4	89.1	-57.4
	Ko Samui	30.3	1.2	2.0	-81.1	166.9	-137.6
	Nakhon Si Thammarat	29.8	1.4	0.0	-107.0	233.0	-177.3
	Songkhla	29.9	1.0	1.7	-73.4	218.7	-39.5
	Hat Yai Airport	29.6	1.6	6.8	-111.8	160.4	-111.5
	Pattani Airport	29.7	1.5	0.0	-74.6	76.8	-130.1
	Narathiwat	29.8	1.5	2.8	-70.0	364.3	18.8
South (West Coast)	Ranong	30.4	1.6	4.5	-148.1	98.8	-145.0
	Takua Pa	29.5	1.3	61.3	-148.7	135.7	-269.4
	Phuket	31.2	1.8	0.0	-142.9	65.8	-204.8
	Phuket Airport	30.4	1.8	0.0	-154.0	253.5	-64.2
	Ko Lanta	30.5	1.5	2.0	-117.0	37.2	-177.2
	Trang Airport	30.8	2.5	79.8	-59.9	165.6	-110.8
	Satun	30.4	2.0	26.5	-179.5	61.8	-333.2
	Over the area	31.7	2.2	32.0	-56.7	105.5	-70.0
					-64%		-40%

- NOTES :
- 1) Mean temperature is the average of daily dry-bulb temperature
  - 2) "T" is trace, rainfall amount less than 0.1 mm.
  - 3) "blank" is incomplete data.
  - 4) Temperature and rainfall are preliminary data.









จัดทำโดยกรมอุตุนิยมวิทยา

